

MECHANICAL POWER TRANSMISSION

Food Safe

Mounted ball bearings



IP69 rated for water and backed by an unprecedented 1-year warranty against failure due to water ingress



Available housing styles

- Standard housing
- Stand-off housing

Safeguard equipment and product integrity

Food safety and reliability

As regulations and consumers continue to pressure manufacturers for more stringent food safety requirements, producers must take a proactive approach to controlling and preventing food borne illnesses. Having the right processes in place and equipment that is designed around food safety principles is critical.

Average cost per recall to food producers = \$10 million

Aggressive cleaning and sanitation practices are necessary, these processes can be extremely tough on equipment and have devastating and far reaching effects on a company's reputation and profits. To ensure uptime, don't let bearings be the weak link in your production chain. Dodge® Food Safe bearings can improve reliability for your clean-in-place procedures and provide you the assurance needed. Food Safe bearings solve two of the most prominent industry challenges when it comes to bearings - grease washout and corrosion. We conquer these challenges with advanced designs and back our product with an unprecedented 1 year warranty from failure due to water ingress.



Food Safe

Housing style	Standard housing	Stand-off housing
Pillow block	x	x
Tapped base	x	x
Two-bolt flange	x	x
Four-bolt flange	x	x
Flanged bracket (3-bolt)	x	x
Wide slot take-up	x	
Narrow slot take-up	x	

Dodge Food Safe bearings

Improved cleanability for clean-in-place applications

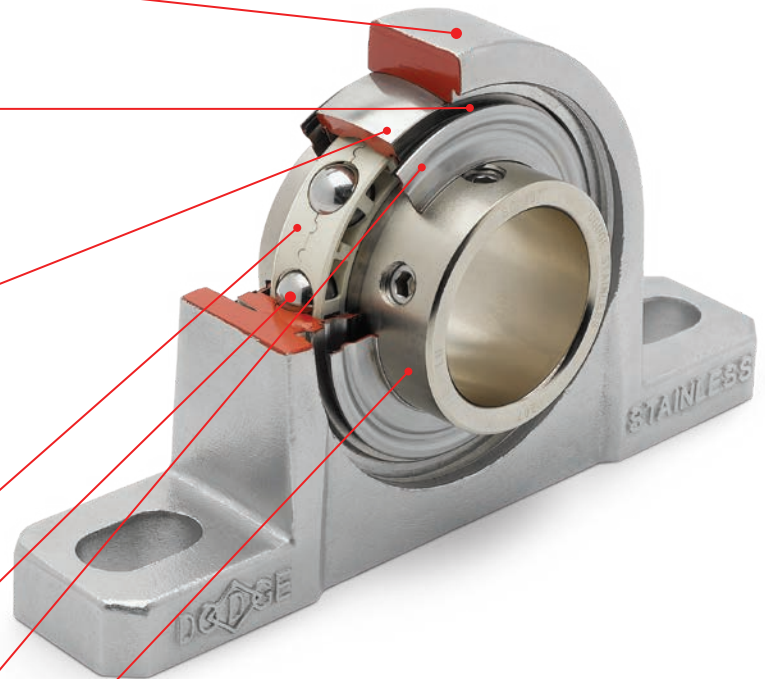
- **Housing**
 - Smooth housing without a grease zerk designed to minimize harboring points
- **Laser identification**
 - Minimizes crevices that can harbor bacteria

Reduced maintenance

- **Sealed bearings**
 - Sealed and lubed for life design minimizes maintenance costs

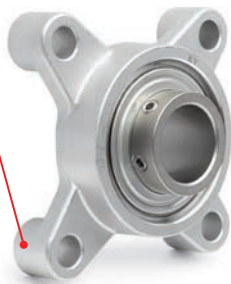
Extended life

- **Max Life cage**
 - Prevents grease washout
- **H1 food grade lubricant**
 - Lubed for life with synthetic food grade lubricant
- **Hydro armor seal**
 - Protects internal rotating elements from water ingress
- **KleenTec insert**
 - Enhanced corrosion resistance from common cleaning agents

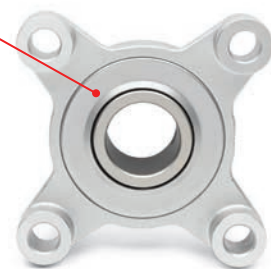


Stand-off bearing additional features

- **Housing**
 - 1/2" integral stand-off



- **Backside seal option**
 - Field installable for additional protection (optional)



Tested at 7 times the recommended water pressure

For proven robustness of our sealing system

Quickly becoming the standard for washdown environments, products rated for IP69 (for water) are protected against high temperature, high pressure spray at close proximity. Although industry guidelines recommend limiting cleaning pressures to 200 psi to prevent atomizing bacteria, our testing is conducted at 7 times this pressure to demonstrate the robustness of our sealing system. To meet the IP69 rating (for water), a bearing cannot allow any water past the seal under the extreme test parameters outlined below. Dodge Food Safe bearings are the first bearings on the market that can meet this requirement without the use of an end cover.

**IP69
for Water**

IP69 test procedures

- 176° Fahrenheit
- 1160 - 1450 psi
- Distance: 4 - 6 inches
- Flow rate: 4 gallons per minute
- 5 revolutions per minute
- 4 spray positions; 0, 30, 60, 90 degrees
- 30 seconds per position



Watch our video



Backed by an unprecedented 1-year warranty

against failure due to water ingress

We are confident in our testing and simulations of real life clean in place procedures and have backed Food Safe bearings with an unprecedented 1-year warranty against failures due to water ingress. Unlike traditional warranties that only cover materials and workmanship, Food Safe bearings carry a 1-year warranty when products are registered upon installation.

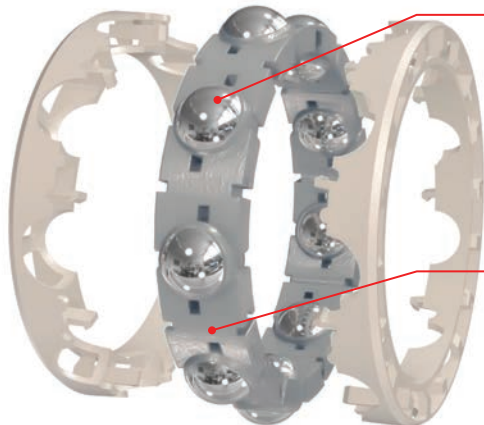


Superior lubrication protection system

Max Life cage - grease washout prevention



Compartments hold grease in to prevent grease washout during high pressure cleaning



Unlike standard designs, the max life cage holds a large volume of grease which ensures constant contact with the rolling elements

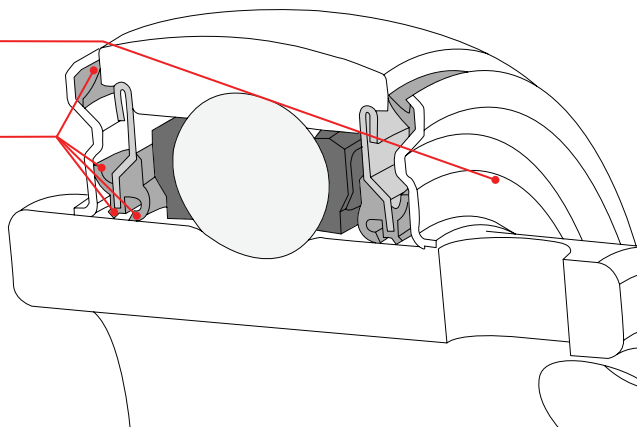
H1 Food Grade synthetic grease

Hydro armor seal

Lubrication protection

Stainless steel flinger is extended for greater protection under high pressure washdown

Four contact lip seals keep water and contamination from entering the bearing



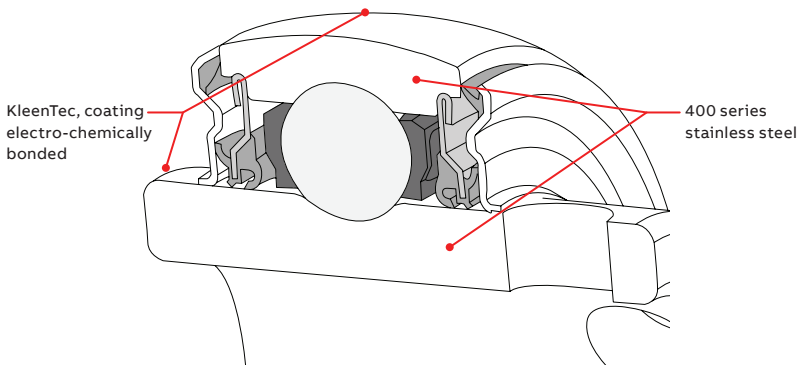
Revolutionary insert design for unmatched corrosion resistance

Food safe bearings with unique KleenTec coating

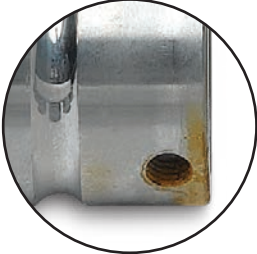
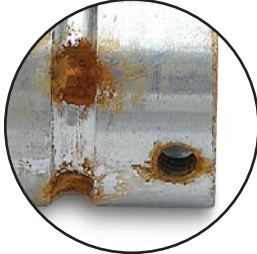
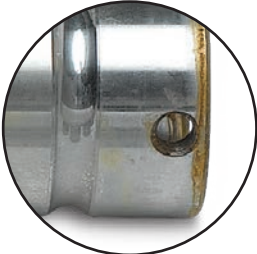

Processing equipment, which commonly includes ball bearings, is frequently washed with high pressure water and chemicals to maintain a clean, hygienic production environment. This type of environment is extremely tough on bearings.

Washdown bearing housings are typically made of 300 series stainless steel which have a high chromium and nickel content for corrosion resistance, but due to the low carbon content results in lower mechanical properties. To achieve the load carrying capacity needed for an inner and outer ring, 400 series stainless is used which has increased carbon content for higher strength, but its lower chromium and nickel content results in decreased corrosion resistance properties.

The Food Safe insert is designed with a 400 series base material to carry high loads, and a proprietary new KleenTec coating which outperforms competitive stainless or coated carbon steel designs. The KleenTec is a multistep process that utilizes chemical, electromechanical, and mechanical finishing techniques resulting in a bond strength that exceeds 61,000 psi. Unlike other coatings, the KleenTec coating system has no grain structure, which prevents the harsh alkaline and acid cleaning solutions from reaching the base metal of the inner and outer rings.



Corrosion resistance comparison

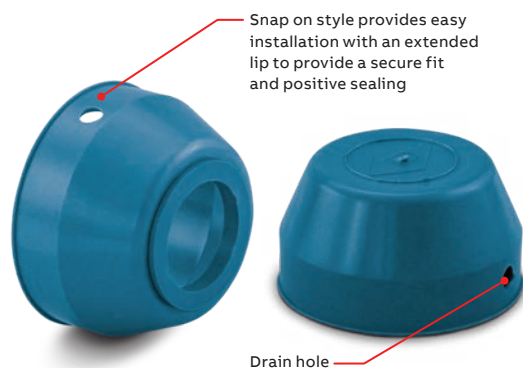
Acid liquid sanitizer	Competitor 1 stainless steel	Competitor 2 zinc coated
		
	Competitor 3 stainless steel	Dodge Food Safe stainless steel + KleenTec coating
		

Improved safety and lower risk of recall

Cover rotating shafts with metal detectable end covers

Covers are made from a patent pending polyethylene material containing stainless steel allowing detection by x-ray equipment and metal detectors. Additionally, the bright blue color is highly visible and makes them stand out in food processing applications.

Open (through shaft) or closed



Secure fit ensures the cover stays in place during cleaning



Closed end cover

Series	Part number	Descriptions
204	128960	ECC-EZ-204
205	128961	ECC-EZ-205
206	128962	ECC-EZ-206
207	128963	ECC-EZ-207
208	128964	ECC-EZ-208
209	128965	ECC-EZ-209
210	128966	ECC-EZ-210

Open end cover

Shaft size	Part number	Descriptions
3/4	128974	ECO-EZ-012
20mm	128991	ECO-EZ-20M
1	128975	ECO-EZ-100
25mm	128992	ECO-EZ-25M
1-3/16	128976	ECO-EZ-103
1-1/4	128989	ECO-EZ-104S
35mm	128993	ECO-EZ-30M
1-1/4	128977	ECO-EZ-104
1-7/16	128990	ECO-EZ-107
35mm	128994	ECO-EZ-35M
1-1/2	128978	ECO-EZ-108
40mm	128995	ECO-EZ-40M
1-11/16	128979	ECO-EZ-111
45mm	128996	ECO-EZ-45M
1-15/16	128980	ECO-EZ-115
50mm	128997	ECO-EZ-50M

Improved safety and lower risk of recall

Backside seal cover for the stand-off housing only

The seal offers auxiliary protection from contaminants on the back side of the housing. It is sold as an accessory and is field installable. A supplementary installation tool is available.



Bearing with seal installed



Bearing without seal



Seal

Backside seals

Part number	Description
137695	204 backside seal - standoff
137696	205 backside seal - standoff
137697	206 backside seal - standoff
137698	207 backside seal - standoff
137699	208 backside seal - standoff

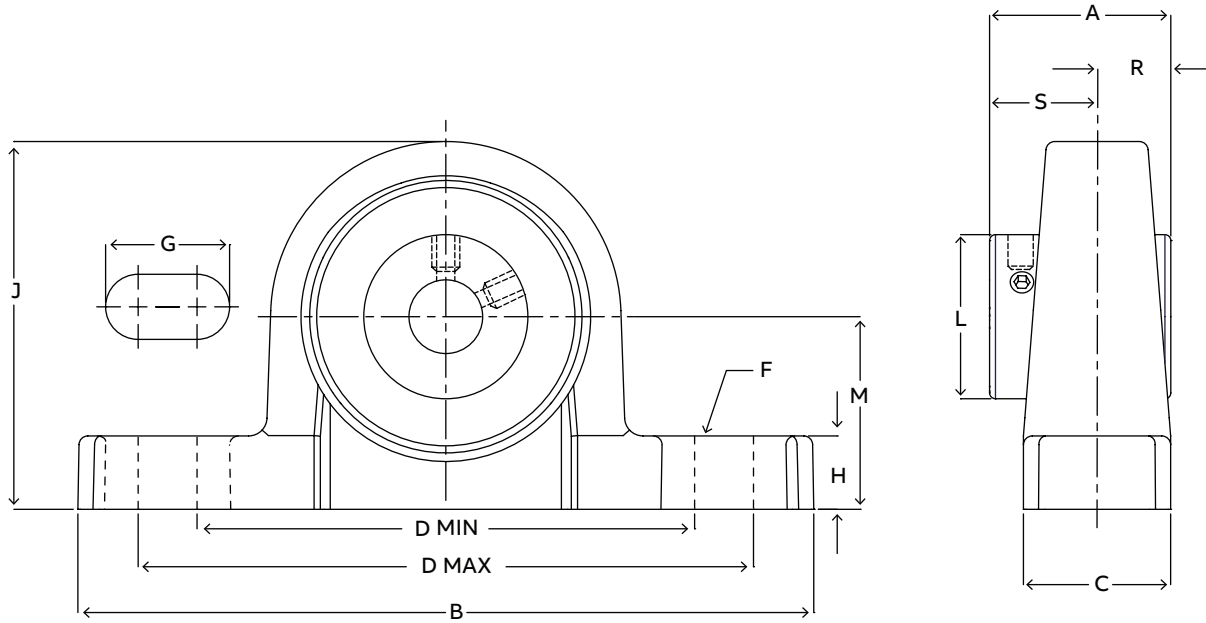
* Available only for stand-off housing

Backside seal tools

Part number	Description
138985	Backside seal installation tool - 204 series
138986	Backside seal installation tool - 205 series
138987	Backside seal installation tool - 206 series
138988	Backside seal installation tool - 207 series
138989	Backside seal installation tool - 208 series

Selection / dimensions

Food Safe mounted bearings

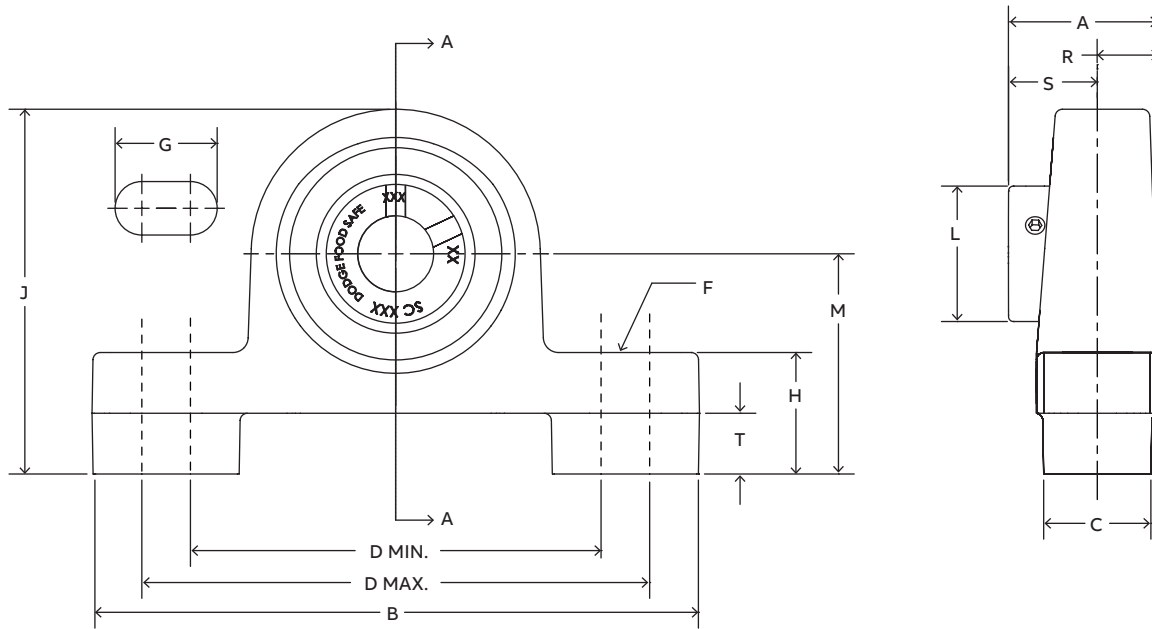


Pillow block bearing with standard housing

Series	Shaft size	Part no.	With Food Safe insert Description	Weight lbs. (kg)	A	B	C	D		F bolt dia	G	H	J	L	M	R	S
								Min.	Max.								
204	1/2	137391	P2B-SCFS-008L-SHFS	1.31													
	5/8	137392	P2B-SCFS-010L-SHFS	1.31	1.23	5.00	1.00	3.38	4.18	3/8	0.84	0.50	2.50	1.11	1.31	0.5	0.73
	3/4	137393	P2B-SCFS-012-SHFS	1.31													
205	20mm	137395	P2B-SCFS-20M-SHFS	0.59	31.2	127.0	25.4	85.9	106.2	M10	21.3	12.7	63.5	28.2	33.3	12.7	18.5
	7/8	137396	P2B-SCFS-014-SHFS	1.59													
	15/16	137397	P2B-SCFS-015-SHFS	1.59	1.34	5.50	1.12	3.68	4.50	3/8	0.85	0.53	2.71	1.32	1.44	0.56	0.78
206	1	137398	P2B-SCFS-100-SHFS	1.59													
	25mm	137399	P2B-SCFS-25M-SHFS	0.73	34.0	139.7	28.4	93.5	114.3	M10	21.6	13.5	68.8	33.5	36.6	14.2	19.8
	1-1/8	137401	P2B-SCFS-102-SHFS	2.33													
207	1-3/16	137402	P2B-SCFS-103-SHFS	2.33	1.52	6.25	1.25	4.26	5.00	1/2	0.93	0.53	3.13	1.57	1.63	0.58	0.94
	1-1/4	137403	P2B-SCFS-104S-SHFS	2.29													
	30mm	137404	P2B-SCFS-30M-SHFS	1.06	38.6	158.8	31.8	108.2	127.0	M12	23.6	13.5	79.5	39.9	41.4	14.7	23.9
208	1-1/4	137410	P2B-SCFS-104-SHFS	3.36													
	1-5/16	137411	P2B-SCFS-105-SHFS	3.36													
	1-3/8	137412	P2B-SCFS-106-SHFS	3.36	1.71	6.50	1.38	4.68	5.44	1/2	0.94	0.56	3.63	1.84	1.88	0.67	1.04
210	1-7/16	137413	P2B-SCFS-107-SHFS	3.19													
	35mm	137414	P2B-SCFS-35M-SHFS	1.47	43.4	165.1	35.1	118.9	138.2	M12	23.9	14.2	92.2	46.7	47.8	17.0	26.4
	1-1/2	137415	P2B-SCFS-108-SHFS	4.39	1.94	7.00	1.50	5.18	6.00	1/2	0.97	0.75	4.00	2.05	2.13	0.75	1.19
210	40mm	137417	P2B-SCFS-40M-SHFS	1.95	49.3	177.8	38.1	131.6	152.4	M12	24.6	19.1	101.6	52.1	54.1	19.1	30.2
	1-15/16	137425	P2B-SCFS-115-SHFS	5.14													
	2	137426	P2B-SCFS-200-SHFS	5.09	1.94	8.00	1.63	5.76	6.68	5/8	1.14	0.62	4.31	2.43	2.25	0.75	1.19
	50mm	137427	P2B-SCFS-50M-SHFS	2.29	49.3	203.2	41.4	146.3	169.7	M16	29.0	15.7	109.5	61.7	57.2	19.1	30.2

Note: Dimensions are in inches except shaded cells that are in millimeters.

Selection / dimensions
Food Safe mounted bearings



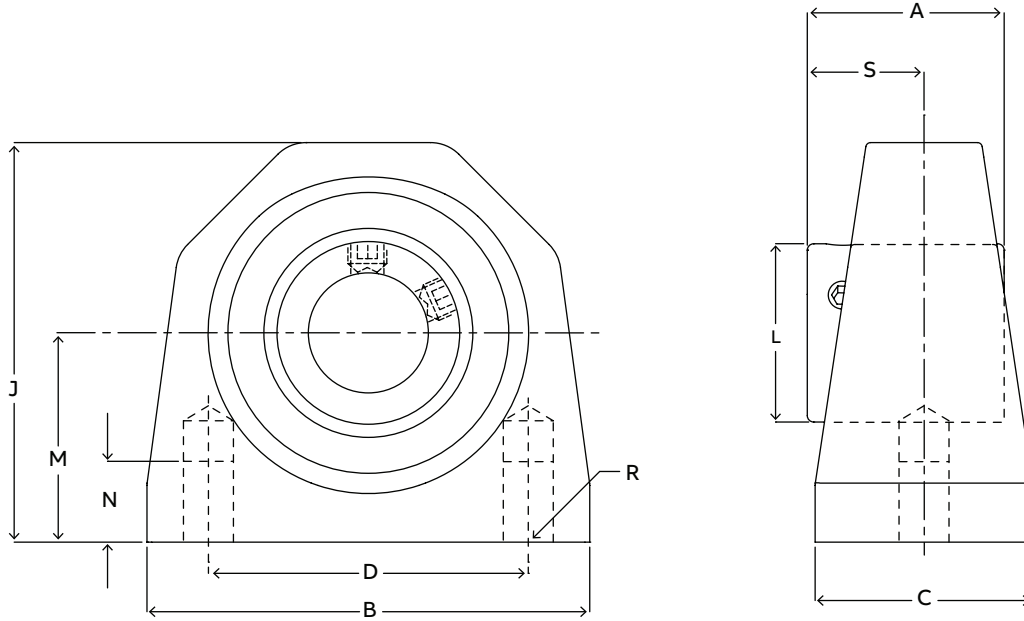
Pillow block bearing with stand-off housing

Series	Shaft size	Part no.	With Food Safe insert Description	Weight lbs. (kg)	A	B	C	D		F bolt dia.	G	H	J	L	M	R	S	T
								Min.	Max.									
204	1/2	138892	P2BSO-SCFS-008L-SHFS															
	5/8	138893	P2BSO-SCFS-010L-SHFS	1.48	1.23	4.97	0.88	3.38	4.18	3/8-16	0.84	1.00	3.00	1.12	1.81	0.50	0.73	0.50
	3/4	138894	P2BSO-SCFS-012-SHFS															
205	20mm	138895	P2BSO-SCFS-20M-SHFS	0.67	31.2	126.2	22.4	85.9	106.2	M10	21.3	25.4	76.2	28.4	46.0	12.7	18.5	12.7
	7/8	138896	P2BSO-SCFS-014-SHFS															
	15/16	138897	P2BSO-SCFS-015-SHFS	1.80	1.34	5.40	0.90	3.68	4.50	3/8-16	0.85	1.03	3.21	1.32	1.94	0.56	0.78	0.50
206	1	138898	P2BSO-SCFS-100-SHFS															
	25mm	138899	P2BSO-SCFS-25M-SHFS	0.82	34.0	137.2	22.9	93.5	114.3	M10	21.6	26.2	81.5	33.5	49.3	14.2	19.8	12.7
	1-1/8	138900	P2BSO-SCFS-102-SHFS															
207	1-3/16	138901	P2BSO-SCFS-103-SHFS	2.61	1.52	6.12	1.12	4.26	5.00	1/2-13	0.93	1.03	3.63	1.57	2.13	0.58	0.94	0.50
	1-1/4	138902	P2BSO-SCFS-104S-SHFS															
	30mm	138903	P2BSO-SCFS-30M-SHFS	1.18	38.6	155.4	28.4	108.2	127.0	M12	23.6	26.2	92.2	39.9	54.1	14.7	23.9	12.7
208	1-1/4	138904	P2BSO-SCFS-104-SHFS															
	1-5/16	138905	P2BSO-SCFS-105-SHFS	3.60	1.71	6.48	1.12	4.68	5.44	1/2-13	0.94	1.06	4.13	1.84	2.38	0.67	1.04	0.50
	1-3/8	138906	P2BSO-SCFS-106-SHFS															
208	1-7/16	138907	P2BSO-SCFS-107-SHFS															
	35mm	138908	P2BSO-SCFS-35M-SHFS	1.63	43.4	164.6	28.4	118.9	138.2	M12	23.9	26.9	104.9	46.7	60.5	17.0	26.4	12.7
	1-1/2	138909	P2BSO-SCFS-108-SHFS	4.60	1.94	6.98	1.16	5.18	6.00	1/2-13	0.97	1.25	4.51	2.05	2.63	0.75	1.19	0.50
	40mm	138910	P2BSO-SCFS-40M-SHFS	2.09	49.3	177.3	29.5	131.6	152.4	M12	24.6	31.8	114.6	52.1	66.8	19.1	30.2	12.7

Note: Dimensions are in inches except shaded cells that are in millimeters.

Selection / dimensions

Food Safe mounted bearings

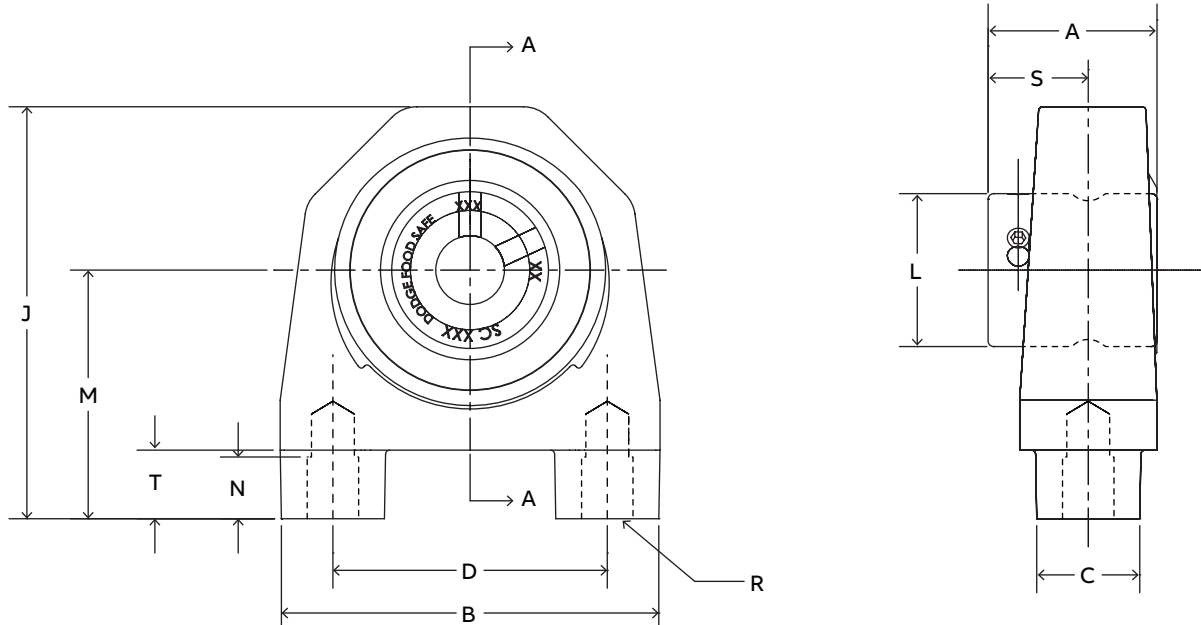


Tapped base bearing with standard housing

Series	Shaft size	Part no.	With Food Safe insert Description	Weight lbs. (kg)	A	B	C	D	J	L	M	N	R	S
204	1/2	137436	TB-SCFS-008L-SHFS	1.27										
	5/8	137437	TB-SCFS-010L-SHFS	1.27	1.23	2.77	1.36	2.00	2.50	1.11	1.31	0.45	3/8-16	0.73
	3/4	136784	TB-SCFS-012-SHFS	1.27										
205	20mm	136855	TB-SCFS-20M-SHFS	.576	31.2	70.4	34.5	50.8	63.5	28.2	33.4	11.4	M10	18.5
	7/8	137441	TB-SCFS-014-SHFS	1.48										
	15/16	137442	TB-SCFS-015-SHFS	1.48	1.34	3.06	1.39	2.00	2.75	1.32	1.44	0.45	3/8-16	0.78
206	1	137443	TB-SCFS-100-SHFS	1.48										
	25mm	137444	TB-SCFS-25M-SHFS	.671	34.0	77.7	35.3	50.8	69.9	33.5	36.5	11.4	M10	19.8
	1-1/8	137446	TB-SCFS-102-SHFS	2.49										
207	1-3/16	137447	TB-SCFS-103-SHFS	2.49	1.52	3.84	1.50	3.00	3.22	1.57	1.69	0.88	7/16-14	0.94
	1-1/4	137448	TB-SCFS-104S-SHFS	2.49										
	30mm	137449	TB-SCFS-30M-SHFS	1.13	38.6	97.5	38.1	76.2	81.8	39.9	42.9	22.4	M10	23.9
208	1-1/4	137450	TB-SCFS-104-SHFS	3.55										
	1-5/16	137451	TB-SCFS-105-SHFS	3.55										
	1-3/8	137452	TB-SCFS-106-SHFS	3.55	1.71	4.15	1.77	3.25	3.66	1.84	1.88	0.75	1/2-13	1.04
208	1-7/16	137453	TB-SCFS-107-SHFS	3.55										
	35mm	137454	TB-SCFS-35M-SHFS	1.61	43.4	105.4	45.0	82.6	93.0	46.7	47.6	19.1	M12	26.4
	1-1/2	137455	TB-SCFS-108-SHFS	4.21	1.94	4.51	1.80	3.50	4.00	2.05	2.13	1.00	1/2-13	1.19
	40mm	137457	TB-SCFS-40M-SHFS	1.91	49.3	114.6	45.7	88.9	101.6	52.1	54.0	25.4	M12	30.2

Note: Dimensions are in inches except shaded cells that are in millimeters.

Selection / dimensions
Food Safe mounted bearings



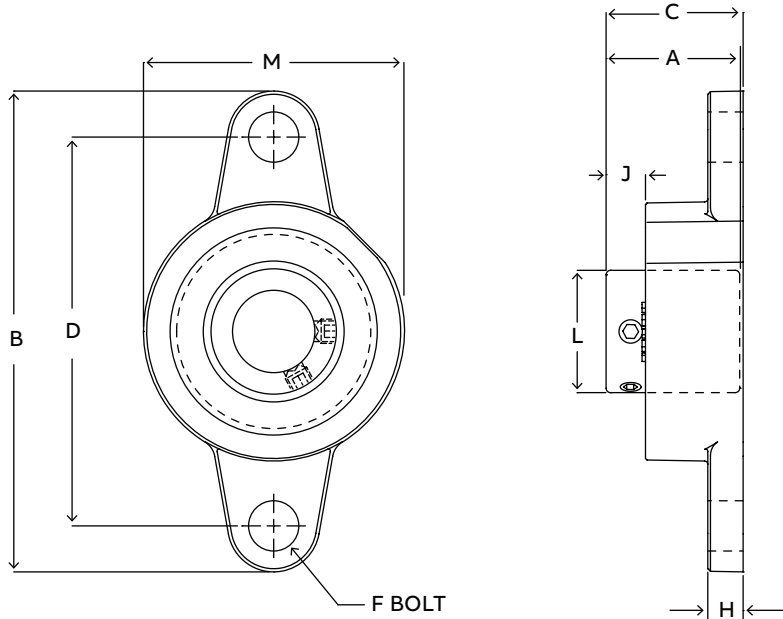
Tapped base bearing with stand-off housing

Series	Shaft size	With stainless steel insert		Weight lbs. (kg)	A	B	C	D	R	J	L	M	N	S	T
		Part no.	Description												
204	1/2	138911	TBSO-SCFS-008L-SHFS												
	5/8	138912	TBSO-SCFS-010L-SHFS	1.33	1.23	2.75	0.75	2.00	3/8-16	3.00	1.12	1.81	0.45	0.73	0.50
	3/4	138913	TBSO-SCFS-012-SHFS												
205	20mm	138914	TBSO-SCFS-20M-SHFS	0.60	31.2	69.9	19.1	50.8	M10	76.2	28.4	46.0	11.4	18.5	12.7
	7/8	138915	TBSO-SCFS-014-SHFS												
	15/16	138916	TBSO-SCFS-015-SHFS	1.60	1.34	2.88	0.88	2.00	3/8-16	3.25	1.32	1.94	0.45	0.78	0.50
206	1	138917	TBSO-SCFS-100-SHFS												
	25mm	138918	TBSO-SCFS-25M-SHFS	0.73	34.0	73.2	22.4	50.8	M10	82.6	33.5	49.3	11.4	19.8	12.7
	1-1/8	138919	TBSO-SCFS-102-SHFS												
207	1-3/16	138920	TBSO-SCFS-103-SHFS	2.49	1.52	3.81	0.81	3.00	7/16-14	3.72	1.57	2.19	0.88	0.94	0.50
	1-1/4	138921	TBSO-SCFS-104S-SHFS												
	30mm	138922	TBSO-SCFS-30M-SHFS	1.13	38.6	96.8	20.6	76.2	M10	94.5	39.9	55.6	22.4	23.9	12.7
208	1-1/4	138923	TBSO-SCFS-104-SHFS												
	1-5/16	138924	TBSO-SCFS-105-SHFS												
	1-3/8	138925	TBSO-SCFS-106-SHFS	3.36	1.71	4.13	0.88	3.25	1/2-13	4.16	1.84	2.38	0.75	1.04	0.50
208	1-7/16	138926	TBSO-SCFS-107-SHFS												
	35mm	138927	TBSO-SCFS-35M-SHFS	1.52	43.4	104.9	22.4	82.6	M12	105.7	46.7	60.5	19.1	26.4	12.7
	1-1/2	138928	TBSO-SCFS-108-SHFS	4.67	1.94	4.48	1.00	3.50	1/2-13	4.50	2.05	2.63	1.00	1.19	0.50
	40mm	138929	TBSO-SCFS-40M-SHFS	2.12	49.3	113.8	25.4	88.9	M12	114.3	52.1	66.8	25.4	30.2	12.7

Note: Dimensions are in inches except shaded cells that are in millimeters.

Selection / dimensions

Food Safe mounted bearings

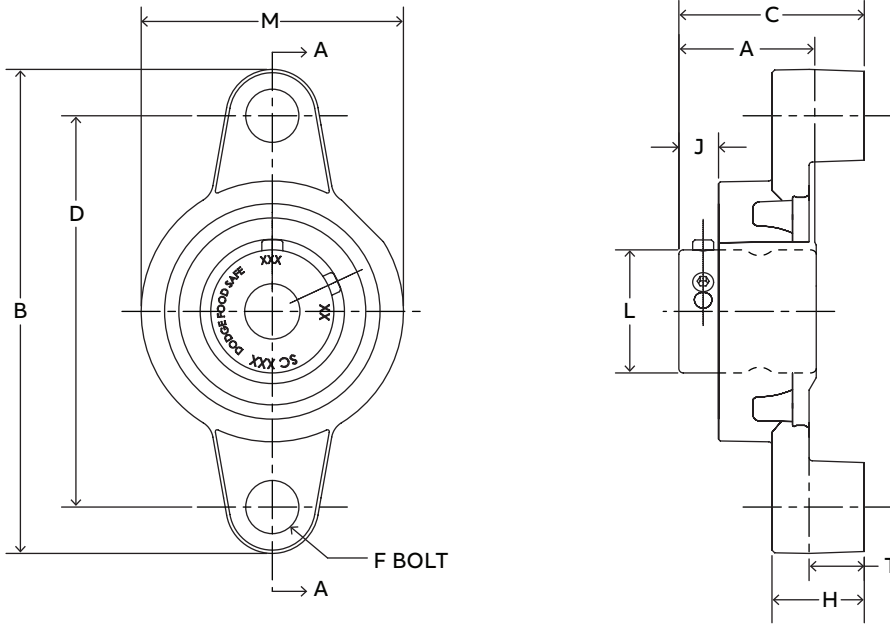


2-bolt flange bearing with standard housing

Series	Shaft size	Part no.	With Food Safe insert Description	Weight lbs. (kg)	A	B	C	D	F bolt dia.	H	J	L	M
204	1/2	137465	F2B-SCFS-008L-SHFS	0.95									
	5/8	137466	F2B-SCFS-010L-SHFS	0.95	1.23	4.38	1.25	3.54	3/8	0.32	0.36	1.11	2.38
	3/4	137467	F2B-SCFS-012-SHFS	0.95									
205	20mm	137469	F2B-SCFS-20M-SHFS	0.42	31.2	111.3	31.7	89.9	M10	8.1	9.1	28.2	60.5
	7/8	137470	F2B-SCFS-014-SHFS	1.21									
	15/16	137471	F2B-SCFS-015-SHFS	1.21	1.34	4.89	1.37	3.89	3/8	0.35	0.39	1.32	2.63
206	1	137472	F2B-SCFS-100-SHFS	1.21									
	25mm	137473	F2B-SCFS-25M-SHFS	0.55	34.0	124.2	34.7	98.8	M10	8.9	9.9	33.5	66.8
	1-1/8	137475	F2B-SCFS-102-SHFS	1.91									
207	1-3/16	137476	F2B-SCFS-103-SHFS	1.91	1.52	5.51	1.59	4.59	3/8	0.35	0.46	1.57	3.13
	1-1/4	137477	F2B-SCFS-104S-SHFS	1.87									
	30mm	137478	F2B-SCFS-30M-SHFS	0.87	38.6	140.0	40.4	116.6	M10	8.9	11.7	39.9	79.5
208	1-1/4	137479	F2B-SCFS-104-SHFS	2.64									
	1-5/16	137480	F2B-SCFS-105-SHFS	2.64									
	1-3/8	137481	F2B-SCFS-106-SHFS	2.64	1.71	6.18	1.76	5.12	1/2	0.42	0.55	1.84	3.50
210	1-7/16	137482	F2B-SCFS-107-SHFS	2.47									
	35mm	137483	F2B-SCFS-35M-SHFS	1.15	43.4	157.0	44.8	130.0	M12	10.7	13.9	46.7	88.9
	1-1/2	137484	F2B-SCFS-108-SHFS	3.40	1.94	6.71	1.97	5.65	1/2	0.42	0.63	2.05	3.84
210	40mm	137486	F2B-SCFS-40M-SHFS	1.50	49.3	170.4	50.1	143.5	M12	10.7	16.1	52.1	97.5
	1-15/16	137491	F2B-SCFS-115-SHFS	4.17									
	2	137492	F2B-SCFS-200-SHFS	4.13	1.94	7.48	1.98	6.18	5/8	0.48	0.63	2.43	4.31
	50mm	137493	F2B-SCFS-50M-SHFS	1.87	49.3	190.0	50.3	157.0	M16	12.2	16.1	61.7	109.5

Note: Dimensions are in inches except shaded cells that are in millimeters.

Selection / dimensions
Food Safe mounted bearings



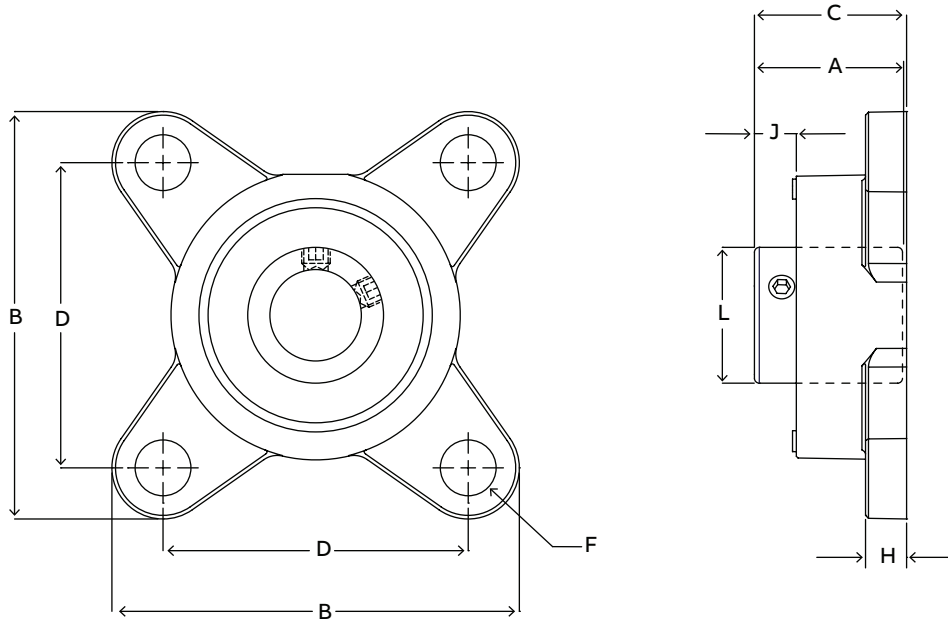
2-bolt flange bearing with stand-off housing

Series	Shaft size	With stainless steel insert		Weight lbs. (kg)	A	B	C	D	F bolt dia.	H	J	L	M	T
		Part no.	Description											
204	1/2	138930	F2BSO-SCFS-008L-SHFS											
	5/8	138931	F2BSO-SCFS-010L-SHFS	1.04	1.23	4.38	1.68	3.54	3/8-16	0.84	0.36	1.12	2.38	0.50
	3/4	138932	F2BSO-SCFS-012-SHFS											
	20mm	138933	F2BSO-SCFS-20M-SHFS	0.47	31.2	111.3	42.7	89.9	M10	21.3	9.1	28.4	60.5	12.7
205	7/8	138934	F2BSO-SCFS-014-SHFS											
	15/16	138935	F2BSO-SCFS-015-SHFS	1.28	1.34	4.89	1.73	3.89	3/8-16	0.85	0.39	1.32	2.63	0.50
	1	138936	F2BSO-SCFS-100-SHFS											
	25mm	138937	F2BSO-SCFS-25M-SHFS	0.58	34.0	124.2	43.9	98.8	M10	21.6	9.9	33.5	66.8	12.7
206	1-1/8	138938	F2BSO-SCFS-102-SHFS											
	1-3/16	138939	F2BSO-SCFS-103-SHFS	1.83	1.52	5.51	1.94	4.59	3/8-16	0.85	0.46	1.57	3.13	0.50
	1-1/4	138940	F2BSO-SCFS-104S-SHFS											
	30mm	138941	F2BSO-SCFS-30M-SHFS	0.83	38.6	140.0	49.3	116.6	M10	21.6	11.7	39.9	79.5	12.7
207	1-1/4	138942	F2BSO-SCFS-104-SHFS											
	1-5/16	138943	F2BSO-SCFS-105-SHFS											
	1-3/8	138944	F2BSO-SCFS-106-SHFS	2.53	1.71	6.18	2.10	5.12	1/2-13	0.92	0.54	1.84	3.50	0.50
	1-7/16	138945	F2BSO-SCFS-107-SHFS											
	35mm	138946	F2BSO-SCFS-35M-SHFS	1.15	43.4	157.0	53.3	130.0	M12	23.4	13.7	46.7	88.9	12.7
208	1-1/2	138947	F2BSO-SCFS-108-SHFS	3.24	1.94	6.71	2.34	5.65	1/2-13	0.92	0.64	2.05	3.84	0.50
	40mm	138948	F2BSO-SCFS-40M-SHFS	1.47	49.3	170.4	59.4	143.5	M12	23.4	16.3	52.1	97.5	12.7

Note: Dimensions are in inches except shaded cells that are in millimeters.

Selection / dimensions

Food Safe mounted bearings

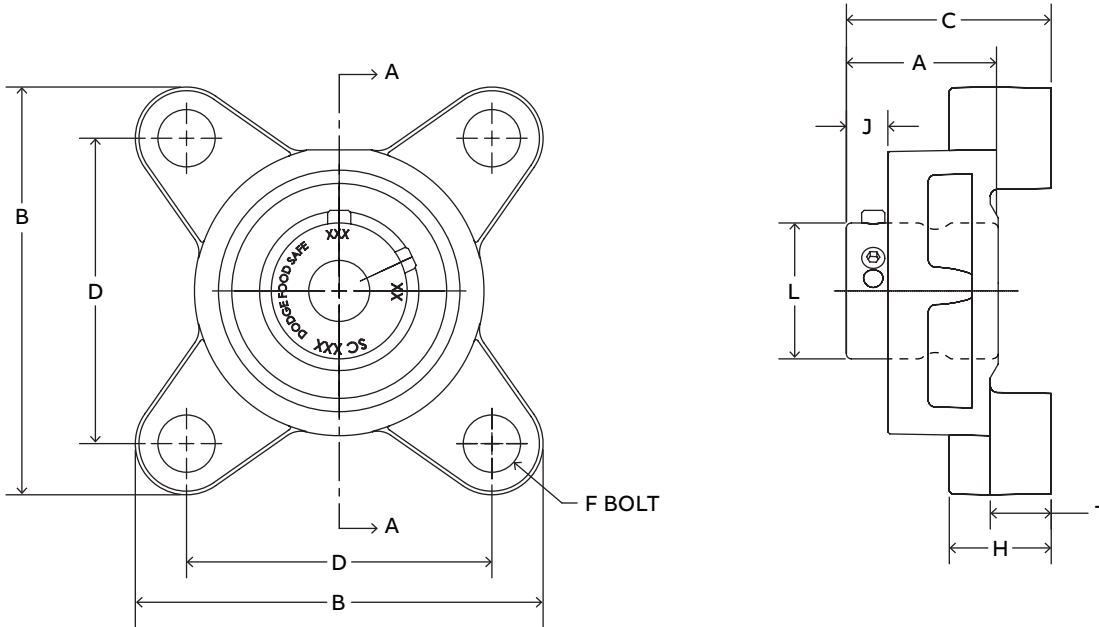


4-bolt flange bearing with standard housing

Series	Shaft size	Part no.	With Food Safe insert Description	Weight lbs. (kg)	A	B	C	D	F bolt dia.	H	J	L
204	1/2	137494	F4B-SCFS-008L-SHFS	1.08								
	5/8	137495	F4B-SCFS-010L-SHFS	1.08	1.23	3.35	1.25	2.51	3/8	0.34	0.34	1.11
	3/4	137496	F4B-SCFS-012-SHFS	1.08								
205	20 mm	137498	F4B-SCFS-20M-SHFS	0.49	31.2	85.1	31.7	63.8	M10	8.6	8.8	28.2
	7/8	137499	F4B-SCFS-014-SHFS	1.39								
	15/16	137500	F4B-SCFS-015-SHFS	1.39	1.34	3.75	1.37	2.75	3/8	0.37	0.38	1.32
206	1	137501	F4B-SCFS-100-SHFS	1.39								
	25 mm	137502	F4B-SCFS-25M-SHFS	0.63	34.0	95.3	34.7	69.9	M10	9.4	9.5	33.5
	1-1/8	137504	F4B-SCFS-102-SHFS	2.09								
207	1-3/16	137505	F4B-SCFS-103-SHFS	2.09	1.52	4.16	1.59	3.24	3/8	0.37	0.45	1.57
	1-1/4	137506	F4B-SCFS-104S-SHFS	2.05								
	30 mm	137507	F4B-SCFS-30M-SHFS	0.95	38.6	105.7	40.4	82.3	M10	9.4	11.4	39.9
208	1-1/4	137508	F4B-SCFS-104-SHFS	2.95								
	1-5/16	137509	F4B-SCFS-105-SHFS	2.95								
	1-3/8	137510	F4B-SCFS-106-SHFS	2.95	1.71	4.68	1.76	3.62	1/2	0.42	0.55	1.84
	1-7/16	137511	F4B-SCFS-107-SHFS	2.78								
210	35 mm	137512	F4B-SCFS-35M-SHFS	1.29	43.4	118.9	44.8	91.9	M12	10.7	13.9	46.7
	1-1/2	137513	F4B-SCFS-108-SHFS	3.70	1.94	5.06	1.97	4.00	1/2	0.43	0.62	2.05
210	40 mm	137515	F4B-SCFS-40M-SHFS	1.64	49.3	128.5	50.1	101.6	M12	10.9	15.7	52.1
	1-15/16	137520	F4B-SCFS-115-SHFS	4.60								
	2	137521	F4B-SCFS-200-SHFS	4.56	1.94	5.67	1.98	4.37	5/8	0.49	0.62	2.43
	50 mm	137522	F4B-SCFS-50M-SHFS	2.07	49.3	144.0	50.3	111.0	M16	12.4	15.7	61.7

Note: Dimensions are in inches except shaded cells that are in millimeters.

Selection / dimensions
Food Safe mounted bearings



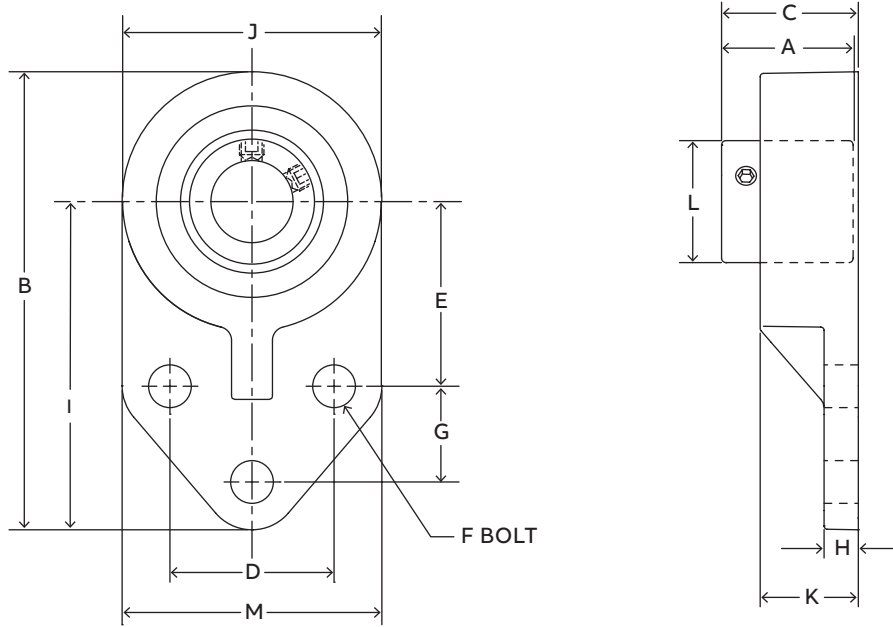
4-bolt flange bearing with stand-off housing

Series	Shaft size	With stainless steel insert		Weight lbs. (kg)	A	B	C	D	F bolt dia.	H	J	L	T
		Part no.	Description										
204	1/2	138949	F4BSO-SCFS-008L-SHFS										
	5/8	138950	F4BSO-SCFS-010L-SHFS	1.30	1.23	3.35	1.68	2.51	3/8-16	0.84	0.34	1.12	0.50
	3/4	138951	F4BSO-SCFS-012-SHFS										
	20 mm	138952	F4BSO-SCFS-20M-SHFS	0.59	31.2	85.1	42.7	63.8	M10	21.3	8.6	28.4	12.7
205	7/8	138953	F4BSO-SCFS-014-SHFS										
	15/16	138954	F4BSO-SCFS-015-SHFS	1.69	1.34	3.75	1.73	2.75	3/8-16	0.87	0.37	1.32	0.50
	1	138955	F4BSO-SCFS-100-SHFS										
	25 mm	138956	F4BSO-SCFS-25M-SHFS	0.77	34.0	95.3	43.9	69.9	M10	22.1	9.4	33.5	12.7
206	1-1/8	138957	F4BSO-SCFS-102-SHFS										
	1-3/16	138958	F4BSO-SCFS-103-SHFS	2.19	1.52	4.16	1.94	3.24	3/8-16	0.87	0.45	1.57	0.50
	1-1/4	138959	F4BSO-SCFS-104S-SHFS										
	30 mm	138960	F4BSO-SCFS-30M-SHFS	0.99	38.6	105.7	49.3	82.3	M10	22.1	11.4	39.9	12.7
207	1-1/4	138961	F4BSO-SCFS-104-SHFS										
	1-5/16	138962	F4BSO-SCFS-105-SHFS										
	1-3/8	138963	F4BSO-SCFS-106-SHFS	2.97	1.71	4.68	2.10	3.62	1/2-13	0.92	0.53	1.84	0.50
	1-7/16	138964	F4BSO-SCFS-107-SHFS										
208	35 mm	138965	F4BSO-SCFS-35M-SHFS	1.35	43.4	118.9	53.3	91.9	M12	23.4	13.5	46.7	12.7
	1-1/2	138966	F4BSO-SCFS-108-SHFS	3.66	1.94	5.06	2.34	4.00	1/2-13	0.93	0.63	2.05	0.50
	40 mm	138967	F4BSO-SCFS-40M-SHFS	1.66	49.3	128.5	59.4	101.6	M12	23.6	16.0	52.1	12.7

Note: Dimensions are in inches except shaded cells that are in millimeters.

Selection / dimensions

Food Safe mounted bearings

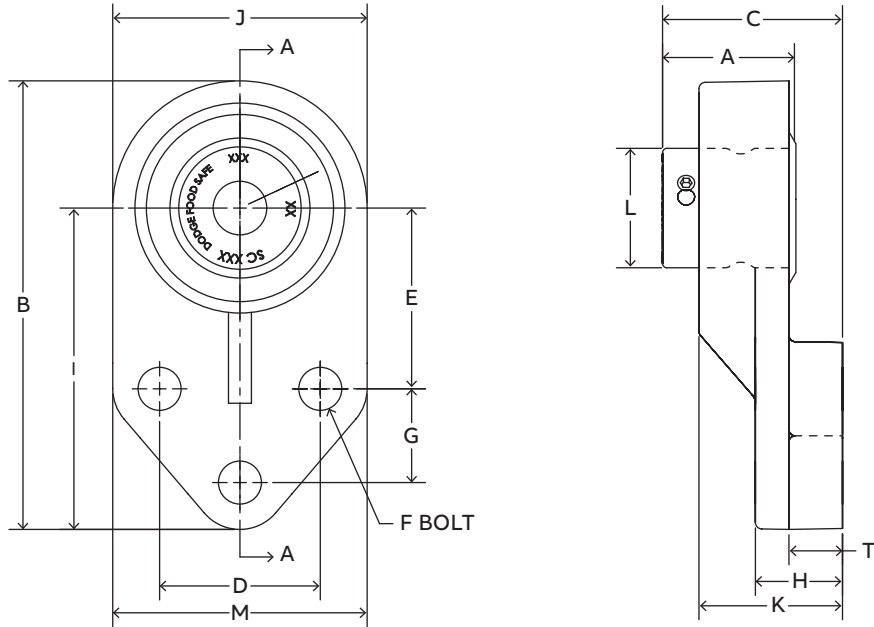


Flange bracket bearing with standard housing

Series	Shaft size	Part no.	With Food Safe insert Description	Weight lbs. (kg)	A	B	C	D	E	F bolt dia.	G	H	I	J	K	L	M
204	1/2	137523	FB-SCFS-008-SHFS	1.00													
	5/8	137524	FB-SCFS-010-SHFS	1.00	1.23	4.19	1.25	1.50	1.69	3/8	0.88	0.31	3.00	2.38	0.90	1.11	2.38
	3/4	137525	FB-SCFS-012-SHFS	1.00													
205	20mm	137527	FB-SCFS-20M-SHFS	.45	31.2	106.4	31.8	38.1	42.9	M10	22.4	7.9	76.2	60.4	22.9	28.2	60.5
	7/8	137528	FB-SCFS-014-SHFS	1.26													
	15/16	137529	FB-SCFS-015-SHFS	1.26	1.34	4.69	1.37	1.63	1.81	3/8	1.13	0.38	3.38	2.62	0.98	1.32	2.50
206	1	137530	FB-SCFS-100-SHFS	1.26													
	25mm	137531	FB-SCFS-25M-SHFS	.52	34.0	119.1	34.7	41.4	46.0	M10	28.7	9.7	85.9	66.4	24.9	33.5	63.5
	1-1/8	137533	FB-SCFS-102-SHFS	1.95													
207	1-3/16	137534	FB-SCFS-103-SHFS	1.95	1.52	5.31	1.59	1.88	2.06	3/8	1.25	0.38	3.75	3.12	1.14	1.57	2.75
	1-1/4	137535	FB-SCFS-104S-SHFS	1.85													
	30mm	137536	FB-SCFS-30M-SHFS	.89	38.6	134.9	40.4	47.8	52.3	M10	31.8	9.7	95.3	79.2	29.0	39.9	69.9
207	1-1/4	137537	FB-SCFS-104-SHFS	2.87													
	1-5/16	137538	FB-SCFS-105-SHFS	2.87													
	1-3/8	137539	FB-SCFS-106-SHFS	2.87	1.71	6.00	1.76	2.00	2.38	1/2	1.25	0.50	4.25	3.12	1.22	1.84	3.25
	1-7/16	137540	FB-SCFS-107-SHFS	2.87													
	35mm	137541	FB-SCFS-35M-SHFS	1.3	43.4	152.4	44.8	50.8	60.5	M12	31.8	12.7	108.0	88.8	31.0	46.7	82.6

Note: Dimensions are in inches except shaded cells that are in millimeters.

Selection / dimensions
Food Safe mounted bearings



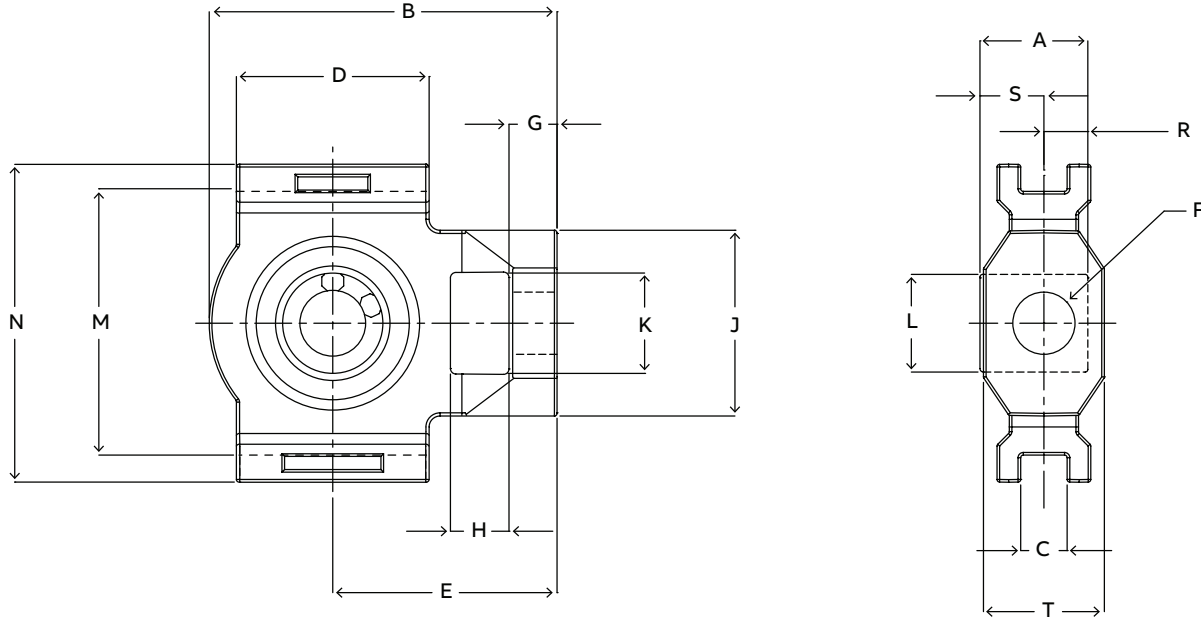
Flange bracket bearing with stand-off housing

Series	Shaft size	With stainless steel insert		Weight lbs. (kg)	A	B	C	D	E	F bolt dia.	G	H	I	J	K	L	M	T	
		Part no.	Description																
204	1/2	138968	FBSO-SCFS-008L-SHFS																
	5/8	138969	FBSO-SCFS-010L-SHFS	1.34	1.23	4.19	1.68	1.50	1.69	3/8-16	0.88	0.81	3.00	2.38	1.33	1.12	2.38	0.50	
	3/4	138970	FBSO-SCFS-012-SHFS																
205	20mm	138971	FBSO-SCFS-20M-SHFS	0.61	31.2	106.4	42.7	38.1	42.9	M10	22.4	20.6	76.2	60.5	33.8	28.4	60.5	12.7	
	7/8	138972	FBSO-SCFS-014-SHFS																
	15/16	138973	FBSO-SCFS-015-SHFS	1.47	1.34	4.69	1.73	1.63	1.81	3/8-16	1.13	0.88	3.38	2.63	1.35	1.32	2.50	0.50	
206	1	138974	FBSO-SCFS-100-SHFS																
	25mm	138975	FBSO-SCFS-25M-SHFS	0.67	34.0	119.1	43.9	41.4	46.0	M10	28.7	22.4	85.9	66.8	34.3	33.5	63.5	12.7	
	1-1/8	138976	FBSO-SCFS-102-SHFS																
207	1-3/16	138977	FBSO-SCFS-103-SHFS	2.12	1.52	5.31	1.94	1.88	2.06	3/8-16	1.25	0.88	3.75	3.13	1.48	1.57	2.75	0.50	
	1-1/4	138978	FBSO-SCFS-104S-SHFS																
	30mm	138979	FBSO-SCFS-30M-SHFS	0.96	38.6	134.9	49.3	47.8	52.3	M10	31.8	22.4	95.3	79.5	37.6	39.9	69.9	12.7	
207	1-1/4	138980	FBSO-SCFS-104-SHFS																
	1-5/16	138981	FBSO-SCFS-105-SHFS																
	1-3/8	138982	FBSO-SCFS-106-SHFS	3.29	1.71	6.00	2.10	2.00	2.38	1/2-13	1.25	1.00	4.25	3.50	1.57	1.84	3.25	0.50	
	1-7/16	138983	FBSO-SCFS-107-SHFS																
	35mm	138984	FBSO-SCFS-35M-SHFS	1.49	43.4	152.4	53.3	50.8	60.5	M12	31.8	25.4	108.0	88.9	39.9	46.7	82.6	12.7	

Note: Dimensions are in inches except shaded cells that are in millimeters.

Selection / dimensions

Food Safe mounted bearings



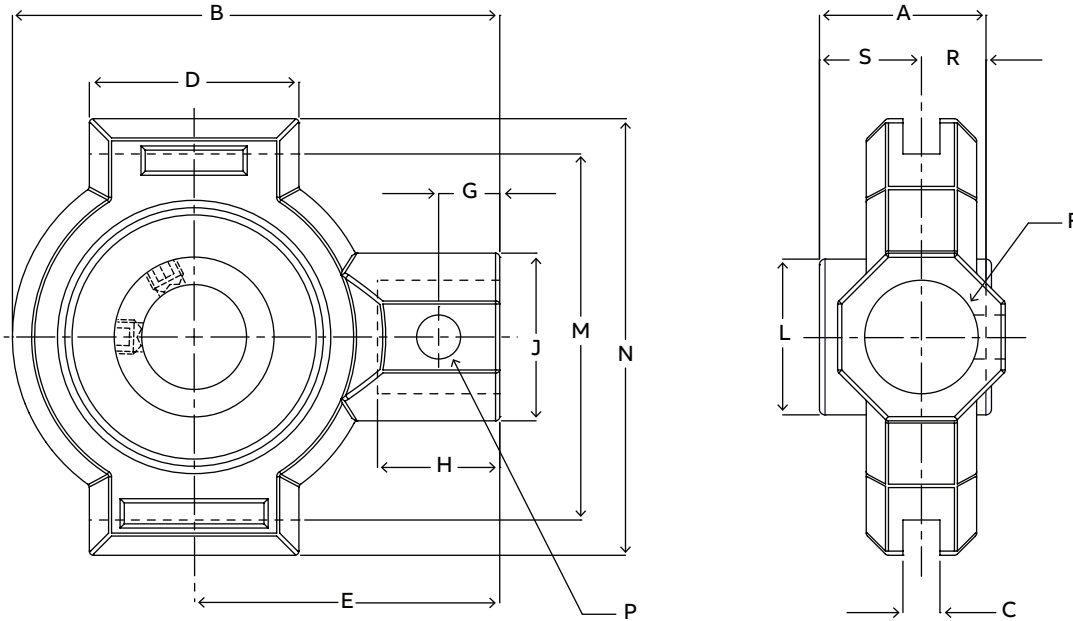
Wide slot take-up bearings

Series	Shaft size	Part no.	With Food Safe insert Description	Weight lbs. (kg)	Take-up frame no. ref.	A	B	C	D	E	F bolt dia.	G	H	J	K	L	M	N	R	S	T
204	1/2	137581	WSTU-SCFS-008L-SHFS	2.14	WS300	1.23	3.97	0.530	2.20	2.56	5/8	0.56	0.65	2.12	1.15	1.11	3.025/2.995	3.63	0.5	0.73	1.38
	5/8	137582	WSTU-SCFS-010L-SHFS	2.14																	
	3/4	137583	WSTU-SCFS-012-SHFS	2.14																	
	20mm	137585	WSTU-SCFS-20M-SHFS	(.97)																	
205	7/8	137586	WSTU-SCFS-014-SHFS	2.03	WS300	1.34	3.97	0.530	2.20	2.56	5/8	0.56	0.65	2.12	1.15	1.32	3.025/2.995	3.63	0.56	0.78	1.38
	15/16	137587	WSTU-SCFS-015-SHFS	2.03																	
	1	137588	WSTU-SCFS-100-SHFS	2.03																	
206	25mm	137589	WSTU-SCFS-25M-SHFS	(.92)	WS308	1.52	4.99	0.530	2.26	3.10	3/4	0.56	0.65	2.43	1.39	1.57	3.540/3.510	4.2	0.58	0.94	1.62
	1-1/8	137591	WSTU-SCFS-102-SHFS	3.36																	
	1-3/16	137592	WSTU-SCFS-103-SHFS	3.36																	
	1-1/4	137593	WSTU-SCFS-104S-SHFS	3.36																	
207	30mm	137594	WSTU-SCFS-30M-SHFS	(1.52)	WS308	1.71	4.99	0.530	2.26	3.10	3/4	0.56	0.65	2.43	1.39	1.84	3.540/3.510	4.2	0.67	1.04	1.62
	1-1/4	137595	WSTU-SCFS-104-SHFS	3.21																	
	1-5/16	137596	WSTU-SCFS-105-SHFS	3.21																	
	1-3/8	137597	WSTU-SCFS-106-SHFS	3.21																	
	1-7/16	137598	WSTU-SCFS-107-SHFS	3.21																	
208	35mm	137599	WSTU-SCFS-35M-SHFS	(1.46)	WS400	1.94	5.63	0.688	3.25	3.50	1	0.63	0.75	2.75	1.94	2.05	4.015/3.985	4.5	0.75	1.19	1.62
	1-1/2	137600	WSTU-SCFS-108-SHFS	4.52																	
	40mm	137602	WSTU-SCFS-40M-SHFS	(2.1)																	

Note: Dimensions are in inches and (mm).

Selection / dimensions

Food Safe mounted bearings



Narrow slot take-up bearings

Series	Shaft size	Part no.	With Food Safe insert Description	Weight lbs. (kg)	Take-up frame no. ref.	A	B	C	D	E	F bolt dia.	G	H	J	L	M	N	Pin dia.	R	S
204	1/2	137552	NSTU-SCFS-008L-SHFS	1.16	NS210	1.23	3.49	0.265	1.50	2.19	3/4	0.44	0.88	1.20	1.11	2.635/2.605	3.13	0.32	0.5	0.73
	5/8	137553	NSTU-SCFS-010L-SHFS	1.16																
	3/4	137554	NSTU-SCFS-012-SHFS	1.16																
205	20mm	137556	NSTU-SCFS-20M-SHFS	.53	NS210	31.2	88.6	6.73	38.1	55.6	19.1	11.2	22.4	30.5	28.2	66.93/66.17	79.5	8.1	12.7	18.5
	7/8	137557	NSTU-SCFS-014-SHFS	1.06																
	15/16	137558	NSTU-SCFS-015-SHFS	1.06																
206	1	137559	NSTU-SCFS-100-SHFS	1.06	NS308	1.34	3.49	0.265	1.50	2.19	3/4	0.44	0.88	1.20	1.32	2.635/2.605	3.13	0.32	0.56	0.78
	25mm	137560	NSTU-SCFS-25M-SHFS	.48																
	1-1/8	137562	NSTU-SCFS-102-SHFS	2.51																
207	1-3/16	137563	NSTU-SCFS-103-SHFS	2.51	NS308	1.52	4.50	0.265	2.50	2.69	3/4	0.50	0.94	1.20	1.57	3.510/3.480	4.13	0.32	0.58	0.94
	1-1/4	137564	NSTU-SCFS-104S-SHFS	2.51																
	30mm	137565	NSTU-SCFS-30M-SHFS	1.14																
208	1-1/4	137566	NSTU-SCFS-104-SHFS	2.65	NS308	1.71	4.50	0.265	2.50	2.69	3/4	0.50	0.94	1.20	1.84	3.510/3.480	4.13	0.32	0.67	1.04
	1-5/16	137567	NSTU-SCFS-105-SHFS	2.65																
	1-3/8	137568	NSTU-SCFS-106-SHFS	2.65																
208	35mm	137570	NSTU-SCFS-35M-SHFS	1.20	NS400	43.4	114.3	6.73	63.5	68.3	19.1	12.7	23.9	30.5	46.7	89.15/88.39	104.9	8.1	17	26.4
	1-1/2	137571	NSTU-SCFS-108-SHFS	4.08																
	40mm	137573	NSTU-SCFS-40M-SHFS	1.85																

Note: Dimensions are in inches and (mm).

Additional information

We reserve the right to make technical changes or modify the contents of this document without prior notice. With regard to purchase orders, the agreed particulars shall prevail. ABB does not accept any responsibility whatsoever for potential errors or possible lack of information in this document.

We reserve all rights in this document and in the subject matter and illustrations contained therein. Any reproduction, disclosure to third parties or utilization of its contents – in whole or in parts – is forbidden without prior written consent of ABB.



ABB Motors and Mechanical Inc.

5711 R.S. Boreham, Jr. Street
Fort Smith, AR 72901
Ph: 1.479.646.4711

Mechanical Power Transmission Support
Ph: 1.864.297.4800

new.abb.com/mechanical-power-transmission